

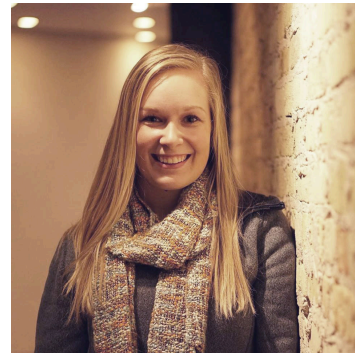
EPIC CREATIVE

For Immediate Release

EPIC Creative Expands Social Media and Account Teams to Support Agency Growth

WEST BEND, Wis. (Oct. 12, 2017) – EPIC Creative, a leading full-service advertising and marketing agency headquartered in West Bend, Wis., welcomes three new employees –Hanah Christiansen, Natalie Jaeger and Brian Lehn– to support the agency’s ongoing growth.

In her new role as social media coordinator, Christiansen will be responsible for creating compelling, relevant and engaging content for agency clients. Christiansen previously held positions with GoGeddit and Wisconsin State Fair where she developed a wide range of social media skills, including strategy, B2B, content development, brand voice, analytics and paid engagement. Christiansen studied journalism, advertising and media studies at the University of Wisconsin-Milwaukee.



Jaeger joins EPIC as an account manager where she’ll work with several brands to build strong client relationships and marketing strategies. Jaeger formerly worked at DCI-Artform where she served as an account coordinator since May 2015. She earned her Bachelor of Science in communication and minor in business management from Carroll University in 2014.

Lehn also joins EPIC as an account manager where he’ll develop and foster client relationships and provide strategic marketing solutions to clients. Prior to joining EPIC, Lehn had previously held executive positions with American Oil Chemists’ Society, Charleston|Orwig and Roundtable Agency. Lehn earned his Bachelor of Science degree from the University of Illinois.



“We’re excited to welcome Hanah, Natalie and Brian to the EPIC team,” said EPIC Creative VP of client services Geri Weiland. “All three new employees bring a lot of energy to the EPIC team and will be critical to supporting the agency’s future success.”

About EPIC Creative

EPIC Creative is proud to be recognized as one of *Milwaukee Journal Sentinel's* 2017 Top Workplaces and Fastest Growing Firms, and listed sixth on the *Milwaukee Business Journal's* Largest Milwaukee-area Advertising Agencies. As a full-service advertising and marketing agency, EPIC serves a broad range of consumer and business-to-business (B2B) brands by providing brand strategy, creative development, photography, videography, social media engagement, public relations, and web design and development. Learn more at www.epiccreative.com.

Media Contact:

Jeff Dardis
EPIC Creative
jdardis@epiccreative.com
262-338-3700, Ext. 289

###